

**AUTOMATIC BUTTERFLY VALVE****PROJECT SPECIFICATION**

Number

E-H6280-241

Sheet : 7 of 15

By : F. Heyman

Rev.

3

R  
E  
V

U-XCV75016, 75026, 75036, 75046, 75056

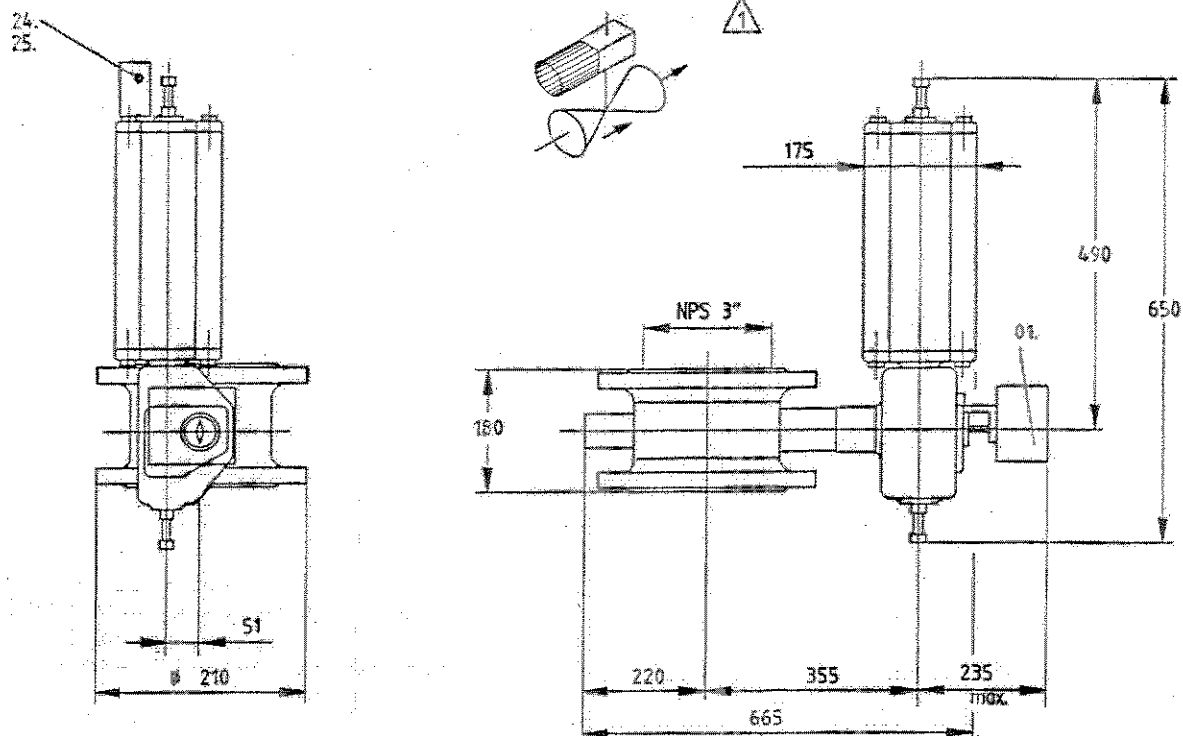
1	TAG NO.	
2		
3	QUANTITY	
4	SERVICE	5
5	MEDIUM   COMPOSITION   MOLECULAR WEIGHT	EQUALISATION 3
6	AMBIENT TEMPERATURE MIN. / MAX.	HYDROGEN / H <sub>2</sub> / 2,03
7	MINIMUM DESIGN METAL TEMPERATURE	-46 / +36 °C ACTUATOR POSITIONER LIMIT SW (note 1)
8	OPERATING TEMPERATURE MIN. / MAX.	-34 °C FOR VALVE BODY AND SEALS
9	OPERATING FLOW COND. 1 / 2 / 3	45.0 / 45.0 °C
10	PRESSURE UPSTREAM COND. 1 / 2 / 3	12300 / 24260 / 30480 Nm <sup>3</sup> /h
11	DP COND. 1 / 2 / 3	7,85 / 13,26 / 17,94 kg/cm <sup>2</sup> g
12	DP IN CLOSED POSITION COND. 1 / 2 / 3	0,041 / 2,998 / 4,375 kg/cm <sup>2</sup>
13	REQUIRED C <sub>v</sub> COND. 1 / 2 / 3	39,0 kg/cm <sup>2</sup>
14	VALVE BODY SIZE   RATING   STYLE	162 / 42 / 162
15	SELECTED CV   CHARACTERISTIC	DN 80 / 300 lbs / DOUBLE FLANGED
16	BODY MATERIAL	180 / EQUAL PERCENTAGE
17	FLANGE RATING   FLANGE FACE FINISH	ASTM 352 LCB (-34°C)
18	FACE TO FACE STD.   FACE TO FACE LENGTH	300 lbs / SMOOTH FINISH 3.2 - 6.3 µmRA
19	VALVE SERVICE STANDARD	LARGE FEMALE FACE ANSI B16.5a / 180MM
20	VALVE CYCLIC SERVICE UNI / BI-DIRECTIONAL	PSA HIGH CYCLING DUTY
21	VALVE INITIAL CONTROL POSITION	BI-DIRECTIONAL
22	SHAFT POSITION FLOW DOWN / UPSTREAM	FLOW SHAFT DOWNSTREAM
23	BEARINGS AND EXCLUDER RING MATERIAL	FOR HIGH CYCLE BUTTERFLY VALVE
24	SHAFT PACKING TYPE   MATERIAL	LIFE LOADED / PTFE
25	DISC   PINS   SHAFT MATERIAL	ASTM A487 CA 6 NM / MFR STD / ASME 420
26	SEAT TYPE   MATERIAL	SOFT SEAT / FKM (VITON)
27	LEAKAGE RATE (CLASS TO B16.104)	CLASS VI BUBBLE TIGHT
28	ACTUATOR TYPE / MOUNTING POSITION	PISTON, SPRING RETURN / C-HU
29	ACTUATOR SIZE / AIR CONNECTION SIZE	B1JU10/40C / 3/8" NPT
30	ACTUATOR ACTION	AIR TO OPEN
31	AIR SUPPLY PRESSURE MIN. / NORM. / MAX.	3,5 / 4,5 / 6,0 kg/cm <sup>2</sup> g
32	SPRING TYPE / ACTION	SINGLE SPRING / SPRING TO CLOSE
33	NUMBER OF CYCLES PER YEAR	+/- 210240
34	VALVE DUTY ON/OFF or CONTROL	HIGH CYCLE DUTY / CONTROL
35	VALVE POSITIONER MODEL	METSO, SMART ND8221/XC EEx ia IIC T6
36	POSITIONER TYPE	SMART ELECTRO / PNEUMATIC
37	CALIBRATED RANGE	4 - 20 mA
38	AIR SUPPLY PRESSURE / AIR CONNECTION	4,5 kg/cm <sup>2</sup> g / NPTF
39	AIR FILTER / REGULATOR	NOT REQUIRED
40	BIOOSTER	QUICK EXHAUST REXROTH P52935-0002
41	PROXIMITY SWITCH / POSITION	0-100 % INCORPORATED IN POSITIONER EEx ia IIC T6
42	TRAVEL STOP	STANDARD
43	TUBING & FITTING MATERIAL / SIZE	FOR TUBE AND FITTINGS REFER TO E-H6280-241T
44	VALVE SUPPLIER	
45	VALVE TYPE NO.	
46	REMARKS :	3" CL300 MAPAG AC25 B1JU10/40C- ND8221/ CXS1Y-I-Instr
47		note 1: Electrical Certificate for -40°C. Functional operation shall be guaranteed for -46°C ambient

This information is proprietary and shall not be disclosed outside your organisation, nor shall it be duplicated, used, or disclosed for any purpose other than as permitted under written agreement with UOP.

C.B. JOURNAL

Dimensions are maximum values ( given in millimeters). Weight is approximate value ( given in kgs).

MOUNTING POSITION: C-HU



**BUTTERFLY VALVE SIZE 080 (3")**

RATING ACC. TO ANSI class 300

FLANGE DRILLING ACC. TO ANSI class 300

FACING : ASME B16.5 Large female ( Ra 3.2-6.3 )

**ACTUATOR**

TYPE : B1JU10/40C

**ACCESSORIES**

01. VALVE CONTROLLER ND8221/CXS1Y-I, EExialICT6, CABLE ENTRY M20x1.5   
WITH SST GAUGES (HOUSING/INTERNAL) GRADUATED IN Kg/cm<sup>2</sup> /bar/psi ,  
MOUNTED WITH ELBOWS TO HAVE VERTICAL READING SCALE

24. QUICK-EXHAUST VALVE 1/4"NPT, REXROTH P52935-0002

25. BY-PASS VALVE 1/4"NPT, PARKER 4F-V6AR-SS

PIPING AND FITTINGS : CU/PVC mm - Swagelok Brass

TOTAL WEIGHT : 80 kg

SO NO. : 113520-005

VENDOR / ORDER NO. :

/ OB-03114-P

CUSTOMER / ORDER NO. : UOP N.V. / H6280

TAG. NO. : U-XCV75016, U-XCV75026, U-XCV75036, U-XCV75046, U-XCV75056

1	03.03.27	CK
ORIG	03.02.17	CK



APPROVED : CK 

Field Systems SA

WITTENHEIM  
FRANCE

CERTIFIED DIMENSION DRAWING

CONTROL VALVE

DIM113520-005

3" CL300 MAPAG AC25-Z-B1JU10/40C-ND8221/CXS1Y-I-Instr.