

**UOP**

UOP N.V. Noorderlaan 147, B-2030 Antwerp, Belgium

**AUTOMATIC BUTTERFLY VALVE****PROJECT SPECIFICATION**

Number

E-H6279-241

Rev.

3

Sheet : 5 of 15

By : F. Heyman

R  
E  
V

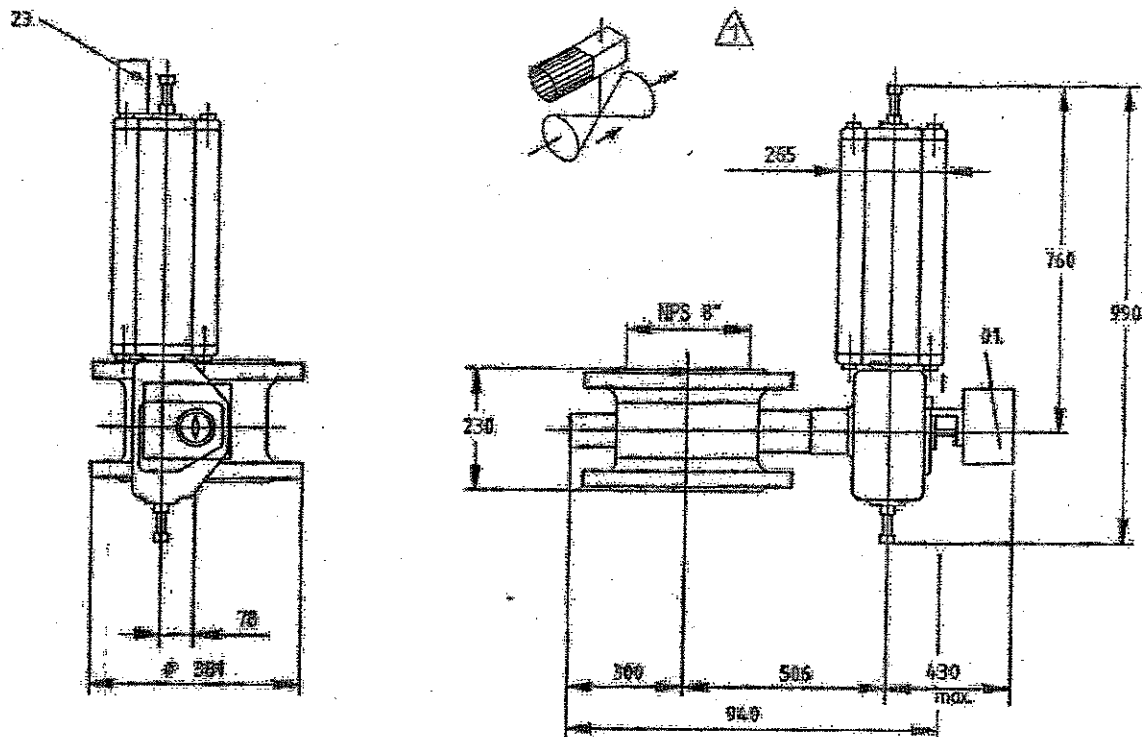
1	TAG NO.	U-XCV55014, 55024, 55034, 55044, 55054, 55064
2		U-XCV55074, 55084, 55094, 55104, 55114, 55124
3	QUANTITY	12
4	SERVICE	DUMP / PURGE
5	MEDIUM   COMPOSITION   MOLECULAR WEIGHT	OFF GAS / H <sub>2</sub> , CO, CH <sub>4</sub> , CO <sub>2</sub> , H <sub>2</sub> O / 28,75
6	AMBIENT TEMPERATURE MIN. / MAX.	-46 / +36 °C ACTUATOR POSITIONER LIMIT SW (note 1)
7	MINIMUM DESIGN METAL TEMPERATURE	-34 °C FOR VALVE BODY AND SEALS
8	OPERATING TEMPERATURE MIN. / MAX.	28,0 / 28,0 °C
9	OPERATING FLOW COND. 1 / 2 / 3	2418 / 4610 / 8060 Nm <sup>3</sup> /h
10	PRESSURE UPSTREAM COND. 1 / 2 / 3	1,95 / 0,50 / 1,95 kg/cm <sup>2</sup> g
11	DP COND. 1 / 2 / 3	1,6 / 0,008 / 1,6 kg/cm <sup>2</sup>
12	DP IN CLOSED POSITION	20,0 kg/cm <sup>2</sup>
13	REQUIRED C <sub>v</sub> COND. 1 / 2 / 3	66,1 / 1819 / 221,7
14	VALVE BODY SIZE   RATING   STYLE	DN 200 / 300 lbs / DOUBLE FLANGED
15	SELECTED CV   CHARACTERISTIC	1920 / EQUAL PERCENTAGE
16	BODY MATERIAL	ASTM 352 LCB (-34°C)
17	FLANGE RATING   FLANGE FACE FINISH	300 lbs / SMOOTH FINISH 3.2 - 6.3 µmRA
18	FACE TO FACE STD.   FACE TO FACE LENGTH	LARGE FEMALE FACE ANSI B16.5a / 230MM
19	VALVE SERVICE STANDARD	PSA HIGH CYCLING DUTY
20	VALVE CYCLIC SERVICE UNI / BI-DIRECTIONAL	UNIDIRECTIONAL
21	VALVE INITIAL CONTROL POSITION	0 - 25%
22	SHAFT POSITION FLOW DOWN / UPSTREAM	FLOW SHAFT DOWNSTREAM
23	BEARINGS AND EXCLUDER RING MATERIAL	FOR HIGH CYCLE BUTTERFLY VALVE
24	SHAFT PACKING TYPE   MATERIAL	LIFE LOADED GLANDPACKING / PTFE
25	DISC   PINS   SHAFT MATERIAL	ASTM A487 CA 6 NM / MFR STD / ASME 420
26	SEAT TYPE   MATERIAL	SOFT SEAT / FKM (VITON)
27	LEAKAGE RATE (CLASS TO B16.104)	CLASS VI BUBBLE TIGHT
28	ACTUATOR TYPE / MOUNTING POSITION	PISTON, SPRING RETURN / C-HU
29	ACTUATOR SIZE / AIR CONNECTION SIZE	B1JU16/55C / 1/2" NPT
30	AIR SUPPLY PRESSURE MIN. / NORM. / MAX.	3,5 / 4,5 / 6,0 kg/cm <sup>2</sup> g
31	SPRING TYPE / ACTION	SINGLE SPRING / SPRING TO CLOSE
32	NUMBER OF CYCLES PER YEAR	+ / - 100000
33	VALVE DUTY ON/OFF or CONTROL	HIGH CYCLE DUTY / CONTROL
34	VALVE POSITIONER MODEL	METSO, SMART ND8221/CXT EEx ia IIC T6
35	POSITIONER TYPE	SMART ELECTRO / PNEUMATIC
36	CALIBRATED RANGE	4 - 20 mA
37	AIR SUPPLY PRESSURE / AIR CONNECTION	4,5 kg/cm <sup>2</sup> g / NPTF
38	AIR FILTER / REGULATOR	NOT REQUIRED
39	BOOSTER	YES VALTEK
40	VALVE POSITION TRANSMITTER	0-100 % INCORPORATED IN POSITIONER EEx ia IIC T6
41	TRAVEL STOP	STANDARD
42	TUBING & FITTING MATERIAL / SIZE	FOR TUBE AND FITTINGS REFER TO E-H6279-241T
43	VALVE SUPPLIER	METSO
44	VALVE TYPE NO.	8" CL300 MAPAG AC25 B1JU16/55C ND8221/ CXT1S1Y-I-Instr
45	REMARKS :	
46		
47		

This information is proprietary and shall not be disclosed outside your organisation, nor shall it be duplicated, used, or disclosed for any purpose other than as permitted under written agreement with UOP.


  
C.B. Hoxmatov

Dimensions are maximum values ( given in millimeters). Weight is approximate value ( given in kgs).

MOUNTING POSITION : C-HU



BUTTERFLY VALVE SIZE 200 (8")

RATING ACC. TO ANSI class 300

FLANGE DRILLING ACC. TO ANSI class 300

FACING : ASME B16.5 Large female ( R<sub>a</sub> 3.2-6.3 )

ACTUATOR

TYPE : B1JU16/55C

ACCESSORIES

01. VALVE CONTROLLER/POSITION TRANSMITTER ND8221/CXT1S1Y-I, EExdIICt6,

WITH SST GAUGES (HOUSING/INTERNAL) GRADUATED IN Kg/cm<sup>2</sup> /bar/psi

MOUNTED WITH ELBOWS TO HAVE VERTICAL READING SCALE, CABLE ENTRY M20x1.5

23. VOLUME BOOSTER 3/4" NPT VALTEK 76407-999

PIPING AND FITTINGS : CU/PPVC mm - Swagelok Brass

TOTAL WEIGHT : 270 kg

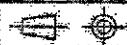
SO NO. : 113519-003

VENDOR / ORDER NO. : METSO AUTOMATION N.V. / OB-03113-P

CUSTOMER / ORDER NO. : UOP N.V. / H6279

TAG. NO. : U-XCV55014, U-XCV55024, U-XCV55034, U-XCV55044, U-XCV55054, U-XCV55064,  
U-XCV75074, U-XCV75084, U-XCV75094, U-XCV75104, U-XCV75114, U-XCV75124

1	03.03.27	CK
ORIG	03.02.17	CK



APPROVED : CK

*[Signature]*

Metso Metso Field Systems SA

WITTENHEIM  
FRANCE

CERTIFIED DIMENSION DRAWING

CONTROL VALVE

DIM113519-003

8" CL300 MAPAG AC25-Z-B1JU16/55C-ND8221/CXT1S1Y-I-Instr.