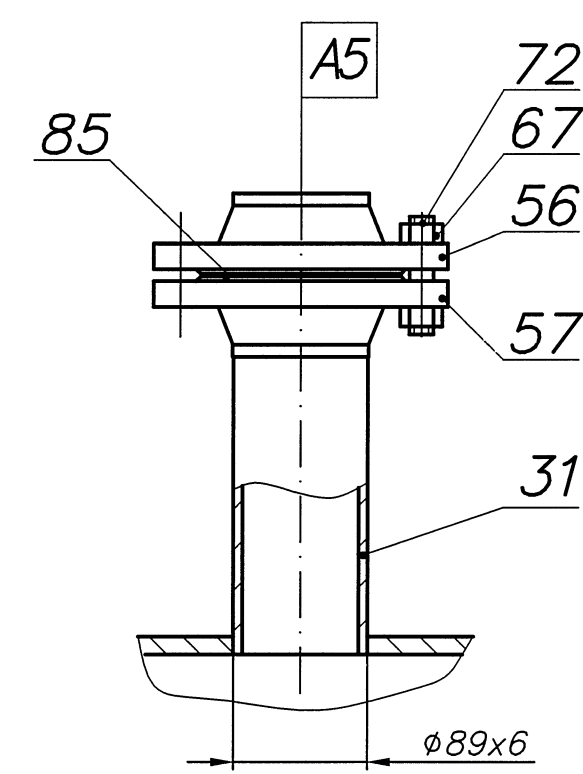
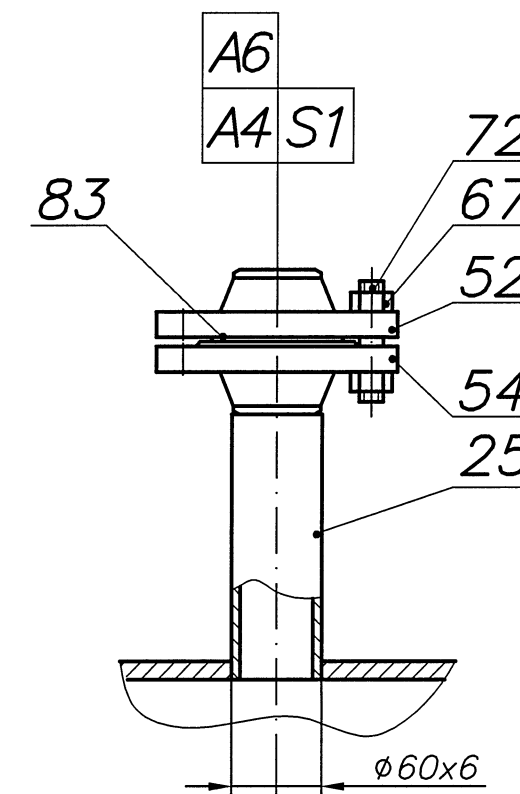


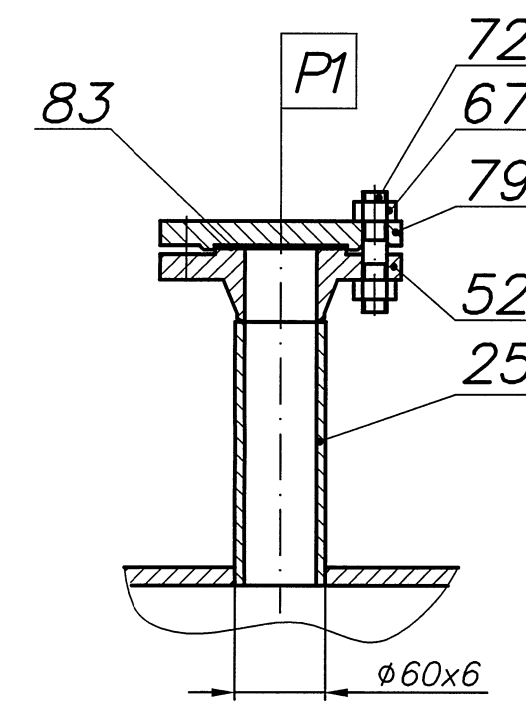
А (1:5) (1)



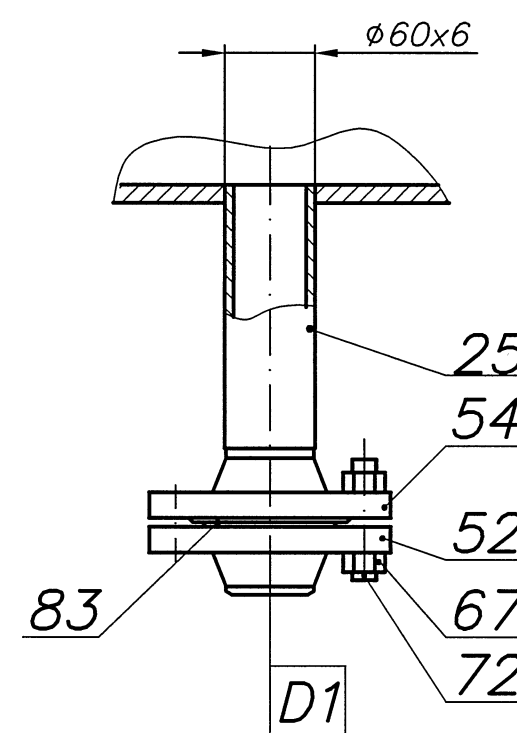
Б (1:5) (1)



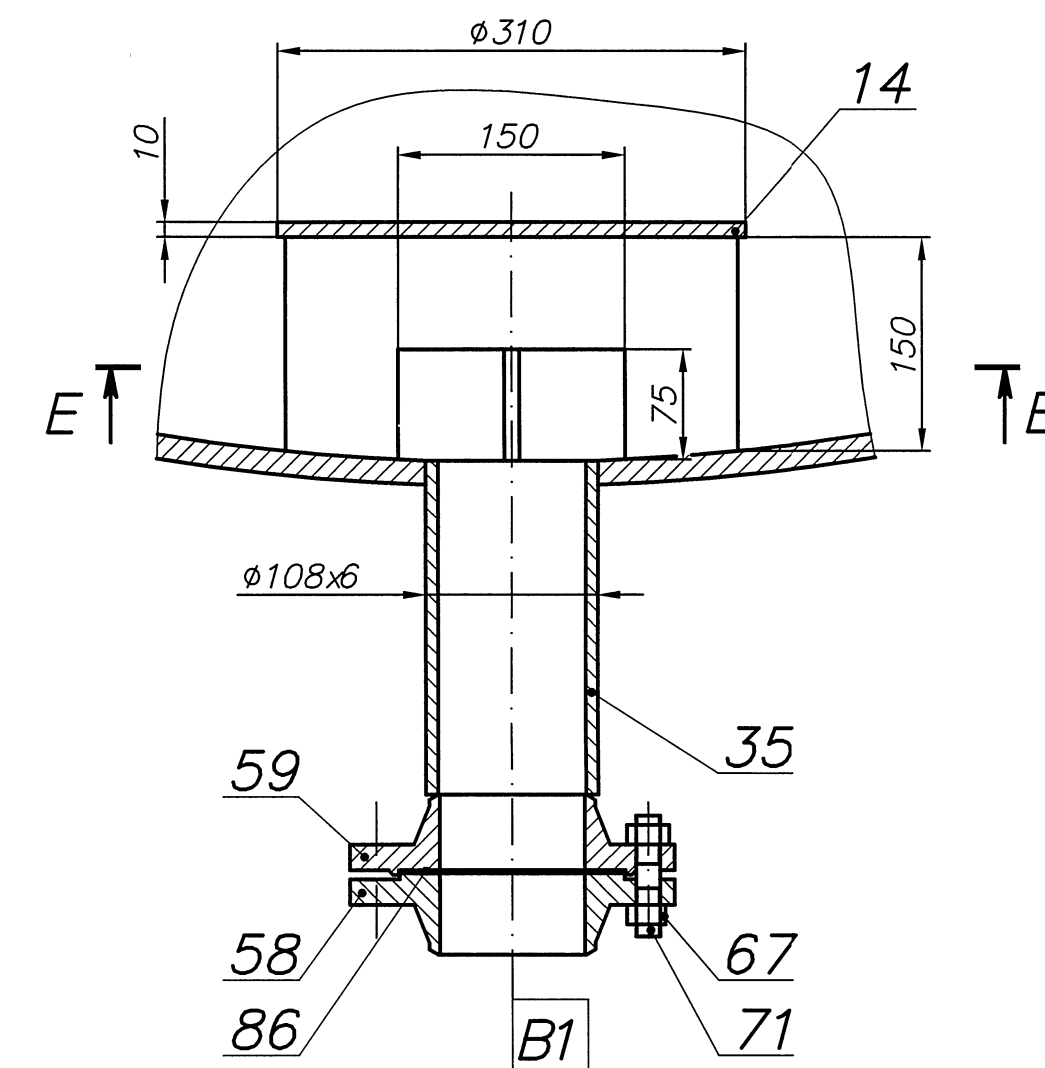
В (1:5) (1)



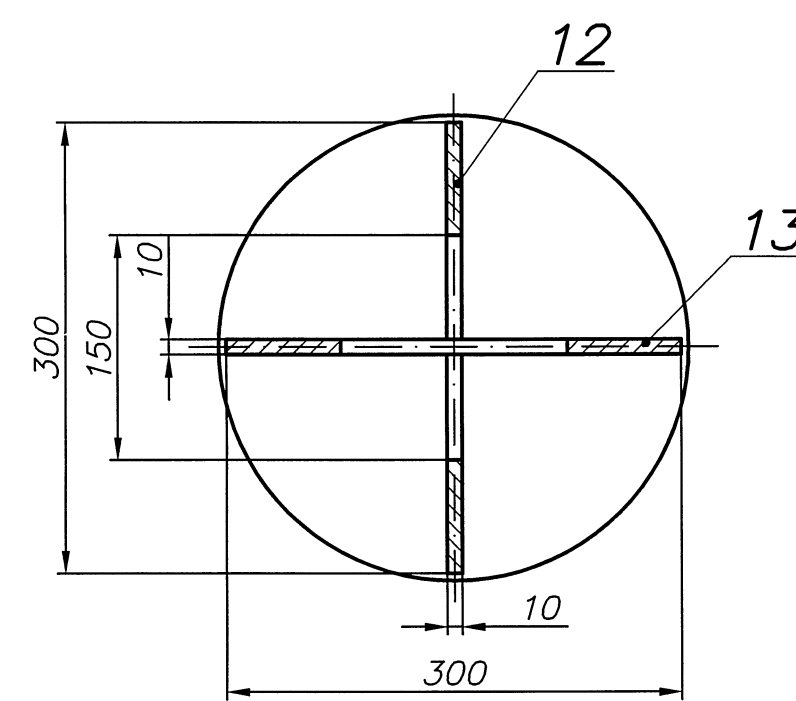
Г (1:5) (1)



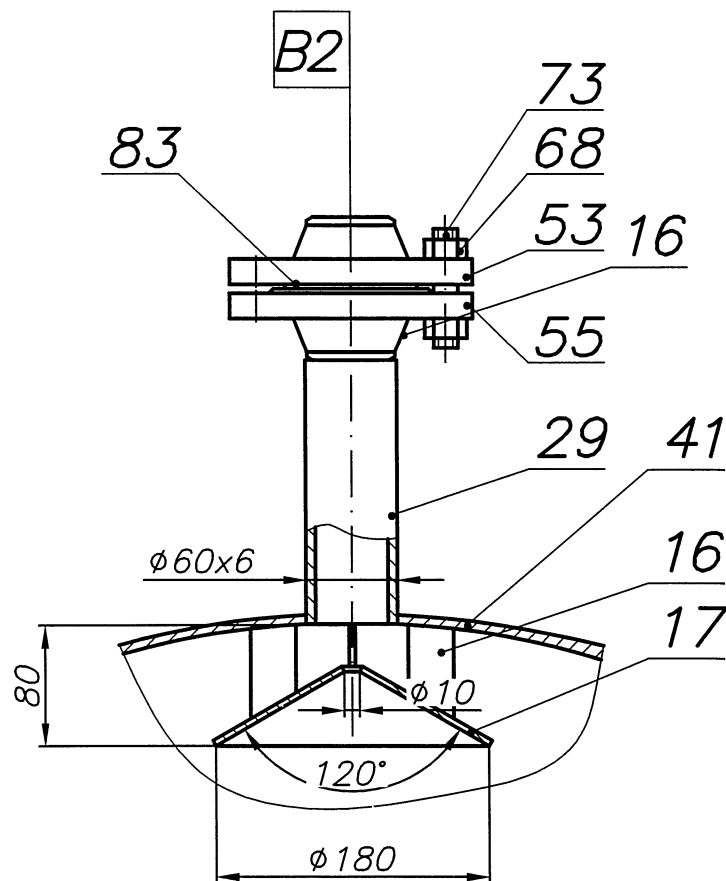
Д (1:5) (1)



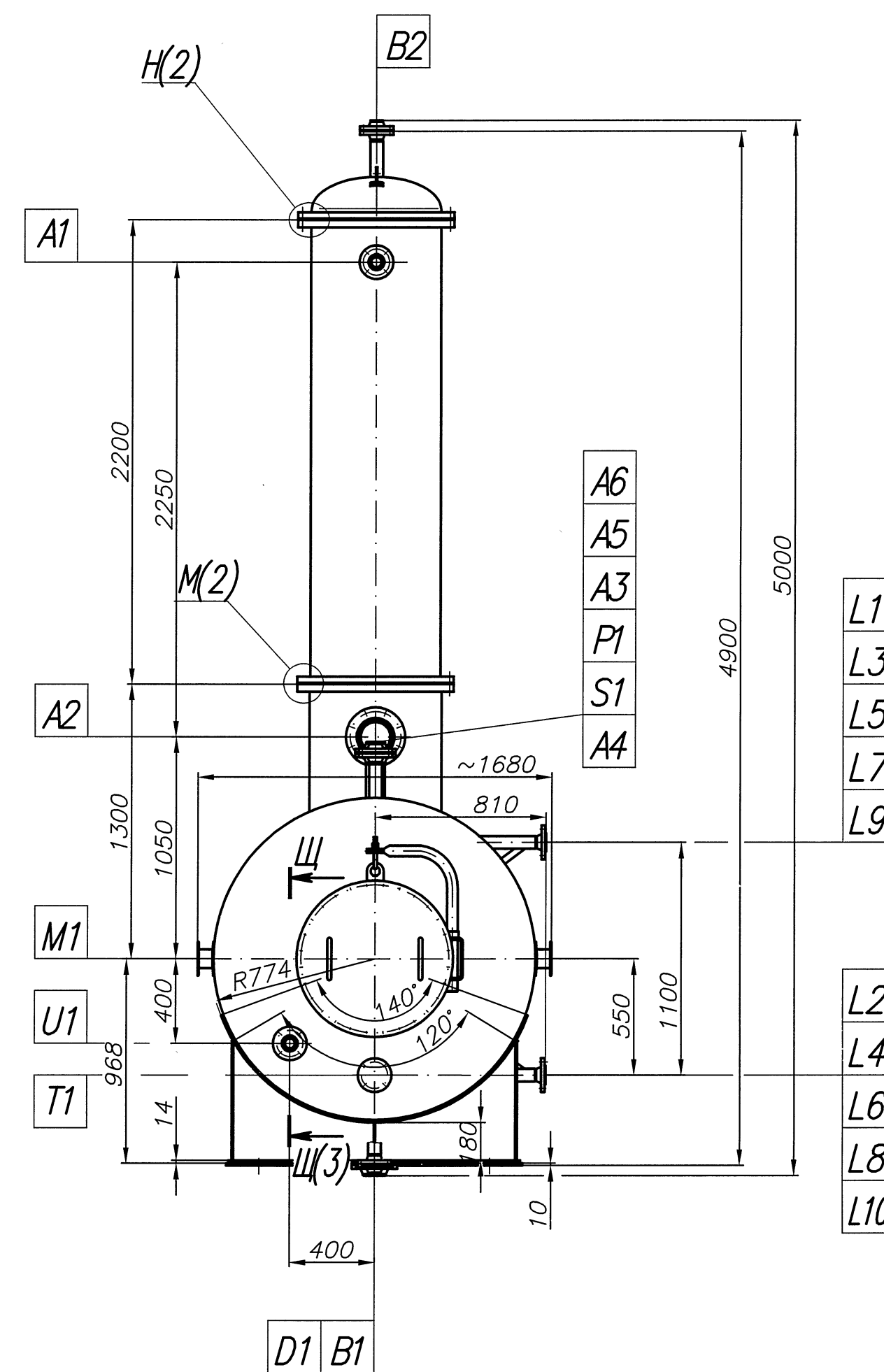
Е-Е (1:5)



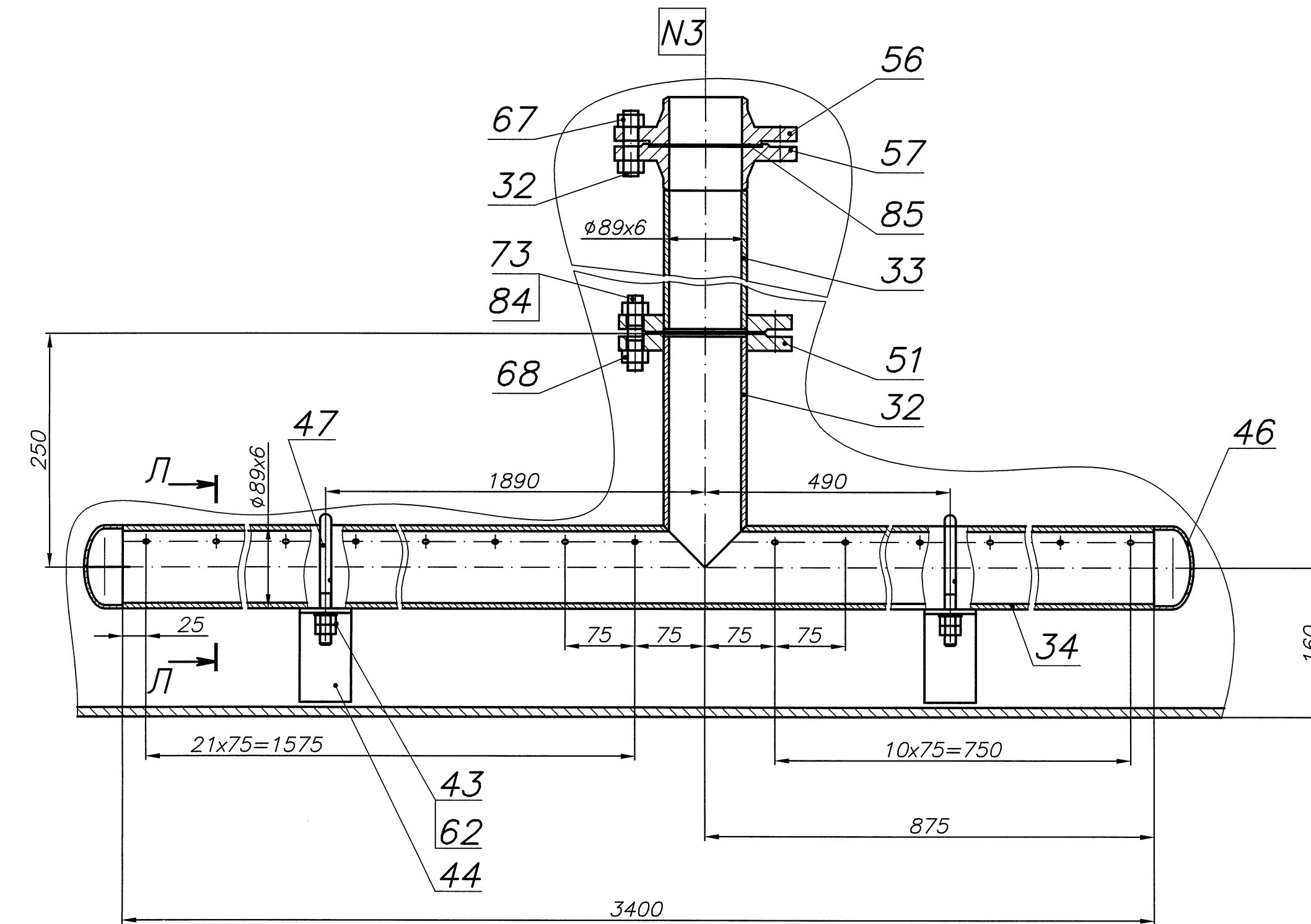
Ж (1:5) (1)



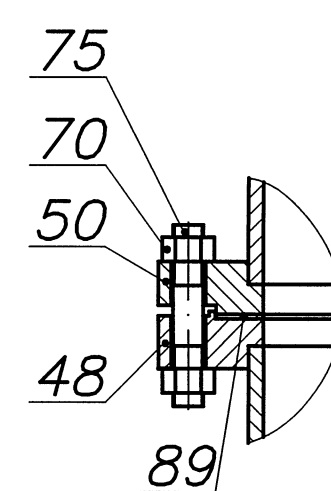
И (1:25) (1)



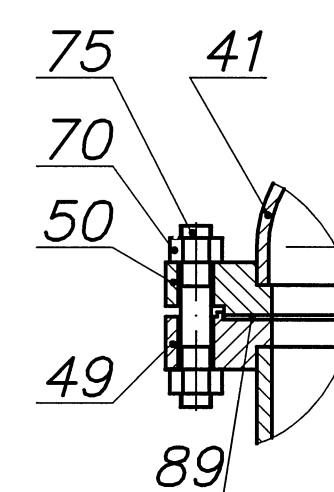
К (1:5) (1)



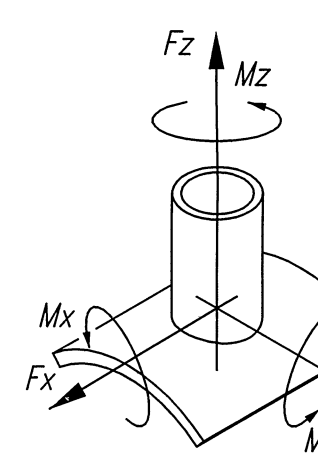
М (1:5)



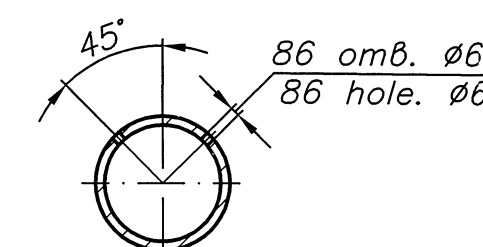
Н (1:5)



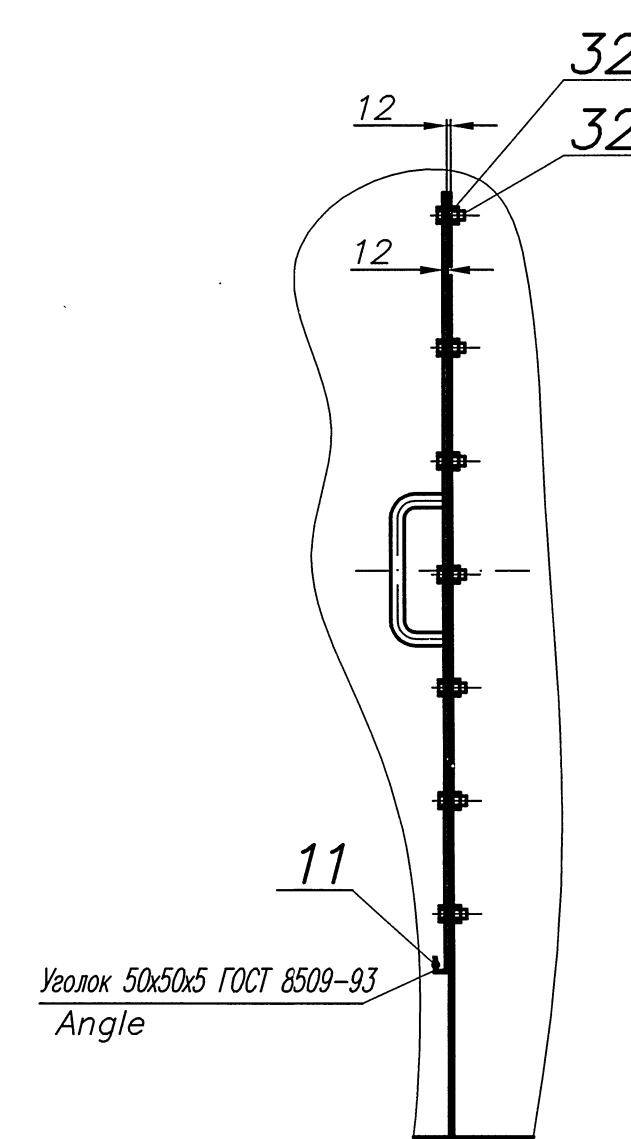
Нагрузка Load	Таблица допустимых нагрузок на штуцера Table of permissible loads on the fittings			
	Обозначение штуцера Nozzle identification			
	A1; A4; A6; B2; S1; U1	A3; A5	B1	A2
F_x, H	503	1078	1447	2464
F_y, H	754	1632	2186	3711
F_z, H	754	1632	3882	3711
$M_x, H \cdot m$	118	385	662	1663
$M_y, H \cdot m$	148	523	877	2217
$M_z, H \cdot m$	192	645	1093	2772

Схема нагрузок
Loads scheme

Л-Л



П'



П (1:10) (1)

